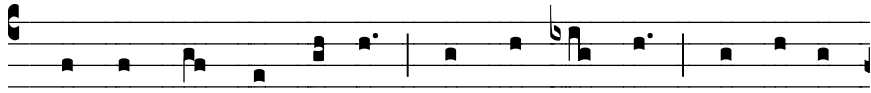
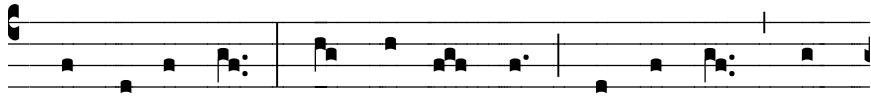


COMMUNION

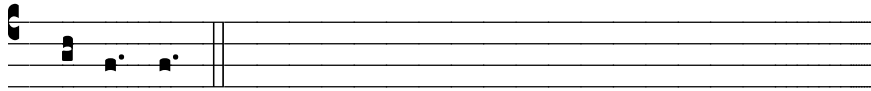
See Jn 20:27



6. Je- sus spoke to Thomas: Put your hand here, and see the



place of the nails. Doubt no long- er, but be- lieve, al-



le- lu- ia.

SECOND SUNDAY OF EASTER

Gregorian Chant for the
English Propers of the Mass

Antiphons of the Roman Missal

by

Columba Kelly, OSB

Sacrae Musicae Doctor

Monk of Saint Meinrad Archabbey

--pre-publication release--

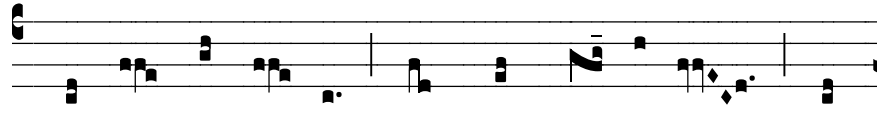
Text: © 1989 ICEL All Rights Reserved.

Music: © Saint Meinrad Archabbey. All Rights Reserved.

SECOND SUNDAY OF EASTER

INTROIT

1 Pt 2:2



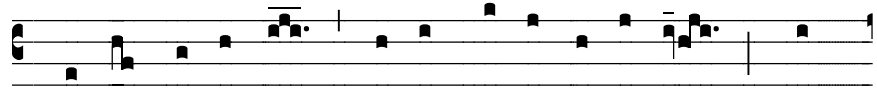
6. Like new-born chil-dren you should thirst for milk, on



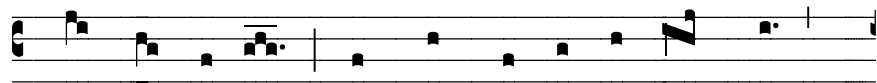
which your spir- it can grow to strength, al- le- lu- ia.

-OR-

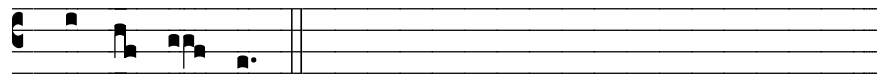
4 Ezr 2:36-37



7. Re-joyce to the full in the glo- ry that is yours, and



give thanks to God who called you to his king- dom,



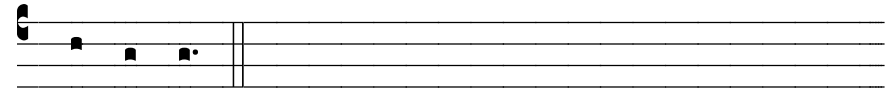
al- le- lu- ia.

RESPONSORIAL PSALM

Ps 118:2-4, 13-15, 22-24



8. Give thanks to the Lord, for he is good, his love is e-



ver- last- ing.

GOSPEL ACCLAMATION



7. Al- le- lu- ia, al- le- lu- ia, al- le- lu- ia.

VERSE

Jn 20:29

You believe in me, Thomas, because you have seen me,
says the Lord;
blessed are they who have not seen me, but still believe!