

TWENTY THIRD SUNDAY  
OF ORDINARY TIME

Gregorian Chant for the  
English Propers of the Mass

Antiphons of the Roman Missal

by

Columba Kelly, OSB  
*Sacrae Musicae Doctor*  
Monk of Saint Meinrad Archabbey

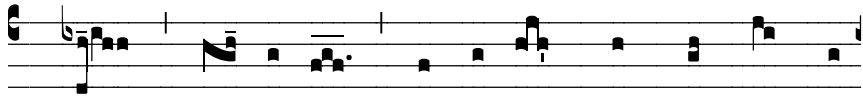
--pre-publication release--

Text: © 1989 ICEL All Rights Reserved.  
Music: © Saint Meinrad Archabbey. All Rights Reserved.

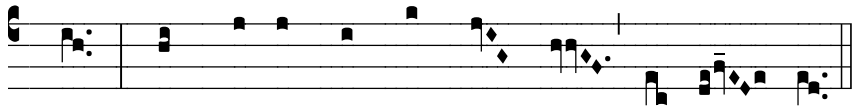
TWENTY THIRD SUNDAY  
OF ORDINARY TIME

INTROIT

*Ps 119:137, 124*



1. Lord, you are just, and the judge-ments you make are



right. Show mer-cy when you judge me, your ser- vant.

GOSPEL ACCLAMATION



7. Al- le- lu- ia, al- le- lu- ia, al- le- lu- ia.

COMMUNION

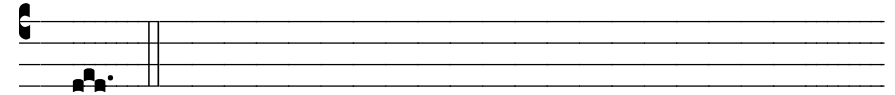
*Ps. 41:2-3*



1. Like a deer that longs for run- ning streams, my soul longs



for you, my God. My soul is thirst- ing for the liv- ing



God.

-OR-

*Jn 8:12*



8. I am the light of the world, says the Lord; the man who



fol- lows me will have the light of life.